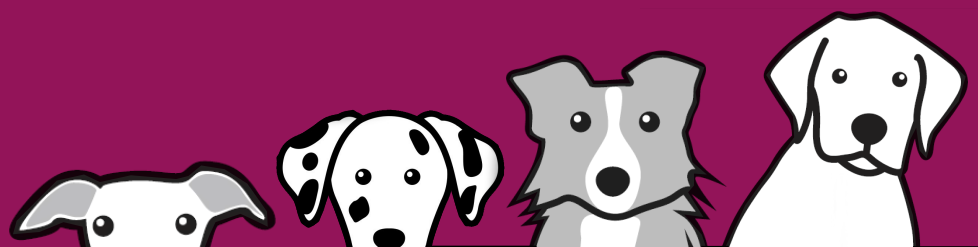
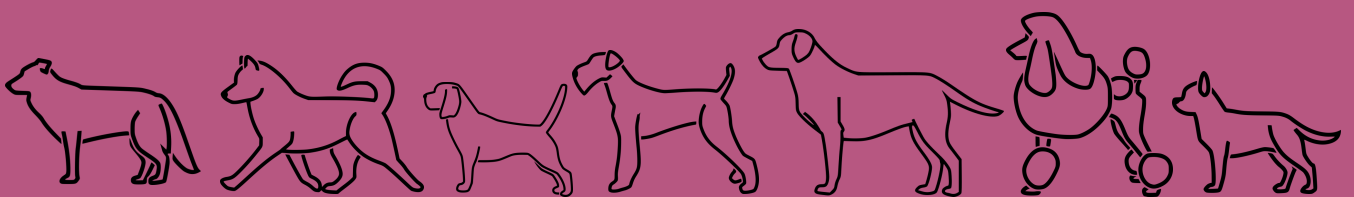
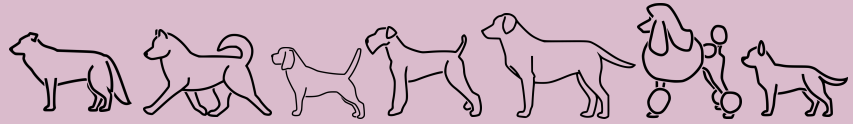


# YKC Young Kennel Club

## YKC AV STAKES COMPETITIONS RULES 2021 (CRUFTS 2022)





# A:

## DEFINITION

The YKC hosts seven stakes competition finals at Crufts culminating in a Grand final in the Main Arena. To qualify for the finals, members must compete in YKC Stakes classes held at Championship breed shows throughout the year, these classes can be found at [www.ykc.org.uk](http://www.ykc.org.uk).

Stakes qualifiers run from March to February for the following Crufts.

The previous year's Crufts counts as a qualifier for the next Crufts (the 7 individual stakes competitions finals will be qualifiers)

YKC stakes differs from many other disciplines because the competition is judged solely on the confirmation of the dog.

The aim of YKC stakes classes is to give YKC members the opportunity to compete in a normal breed class with their pet dog. It is not designed for members to borrow someone else's dog with the sole purpose of winning.

# B:

## CLASSES

- There are several different classes for you to enter depending on which show is holding the qualifier.

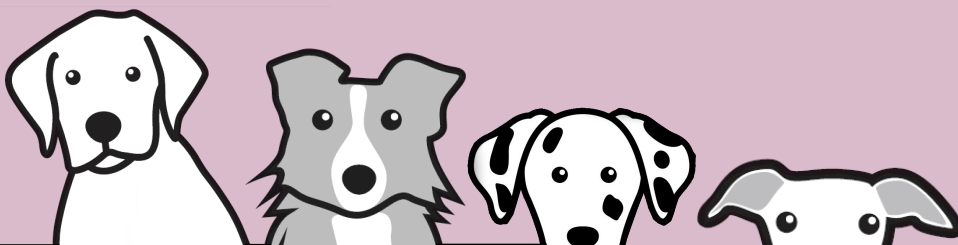
There are seven (7) different classes for members to enter :

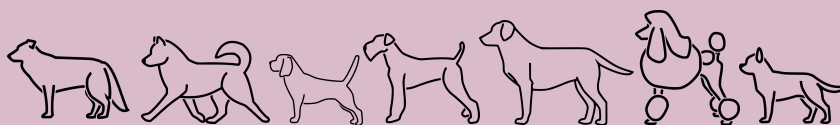
- AV Gundog
- AV Working
- AV Pastoral
- AV Terrier
- AV Hound
- AV Utility
- AV Toy

*\*AV stands for Any Variety*

You are required to have a pedigree dog in the corresponding group in order to enter Stakes competitions.

The YKC will only count points from classes at approved qualifying events as listed on the YKC website. Any award from a show which has not been approved by the YKC Management Team will not qualify for Crufts. It is important that you check that the wording in show schedules corresponds with the wording printed in these regulations; if in doubt please contact the Young Kennel Club Team before entering.





# C:

## HANDLERS

There are no age categories for YKC members. Ages 6-24 will all compete for the same awards.

Once a dog has qualified with one handler, it may not be qualified again with a different handler.

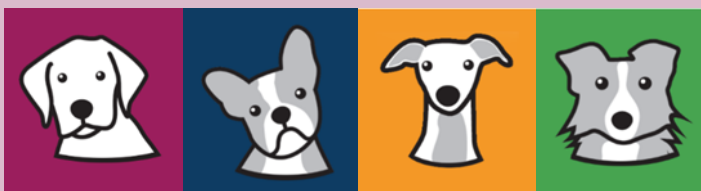
No substitute handlers are permitted – the dog must be handled by the same person who entered the qualifier.

If a member is competing with two separate dogs in the same competition, another YKC member may hold the dog, but may not show the dog other than to complete group exercises that would be impossible with one handler.

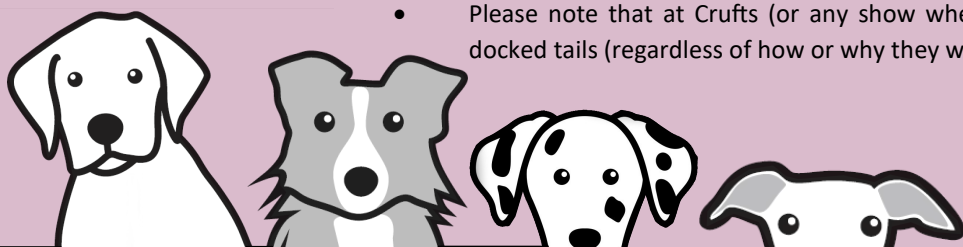
In order to enter any YKC competition, you must be a fully paid up member at the time of entry and competition. If you enter a Crufts qualifier and you have not previously paid your membership fee then any award will be forfeited.

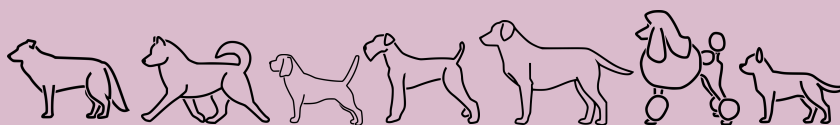
# D:

## DOGS



- Only dogs of six (6) calendar months of age and over on the day of competition are eligible for entry into an YKC qualifying stakes class.
- Dogs must be on the Kennel Club Breed register to compete in an YKC stakes competition.
- All pedigree dogs are eligible to take part provided the dog is registered on the Kennel Club Breed Register.
- To register your dog on a Kennel Club register, please contact 01296 318540 for further information.
- The dog must be registered;
  - Solely or jointly in the member's name or
  - In the name of a member of the family (i.e. a group of people related by blood or marriage) and under these circumstances the dog must be resident at the YKC member's address.
- In certain cases members may be permitted, through permission from the YKC Office, to show a dog that is not registered in their name, the family name or registered at their address and must write into the YKC office, stating their reasons, for permission to show which will then go forward to a Management Meeting for approval.
- This must be approved by the Management Meeting before entering ANY qualifier and not after the member has qualified at a show.
- Permission to show will be for the competing year of the request. Separate permission must be gained for subsequent year.
- Please note that at Crufts (or any show where the public pay an entrance fee) dogs with docked tails (regardless of how or why they were docked) are not allowed to be exhibited.





# E:

## QUALIFICATION

To Qualify for Crufts, members must gain points by being placed 1<sup>st</sup>, 2<sup>nd</sup> or 3<sup>rd</sup> in YKC Stakes qualifying events. To achieve qualification, members must reach **30** points for the year. Any points gained will be for entry into Crufts the following year.

Points are gained by the achieving the following results:



- **1<sup>st</sup> Place: 30 POINTS**



- **2<sup>nd</sup> Place: 15 POINTS**



- **3<sup>rd</sup> Place: 10 POINTS**

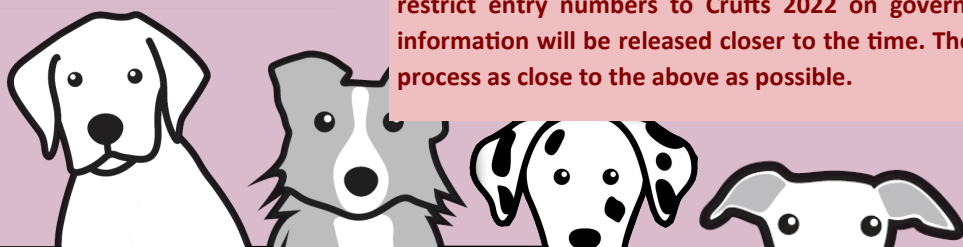
- All points are reset to 0 on 1st February of each year. No points are carried over from previous years. (If you gained points towards the cancelled Crufts 2021 Stakes competition, these will be added to this year and count for Crufts 2022)
- The points gained are for the dog and handler combination. If you score points with two different dogs, they are not combined.
- Similarly, if either a dog or handler cannot compete at Crufts, neither can be substituted and the qualification place is forfeited.
- Your qualified dog will determine the day that you show in line with its respective group. At Crufts the groups are arranged over 4 days, each year the groups rotate, so if your group was on a Friday this year, it will be on a Saturday next year.

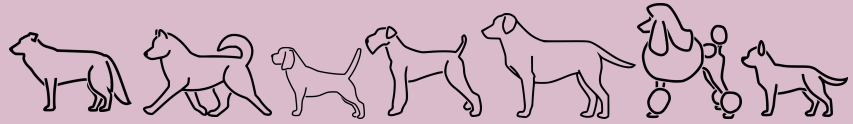
The groups are arranged as follows:

- Utility & Toy
  - Gundog
  - Working & Pastoral
  - Terrier & Hound
- Classes are divided by dog group with the winner of each group qualifying to go through to the YKC Stakes Final which will be held on the last day of Crufts in the Main Arena. From these seven dogs there will be an YKC Stakes Overall Winner and an YKC Stakes Runner Up.

### COVID 19

The YKC may have to drastically alter how members qualify for Crufts 2022. This may be because fewer shows were able to hold YKC qualifiers this year, or possibly that we are required to restrict entry numbers to Crufts 2022 on government advice. More up to date qualification information will be released closer to the time. The YKC will endeavour to keep the qualification process as close to the above as possible.





# F:

COVID 19

Please note, until guidelines specify otherwise, the following rules must be adhered to in order to comply with government guidance.

- Rings must have a separate entrance and exit, which must be adhered to by all exhibitors
- All exhibitors must wear a mask whilst in the ring
- All exhibitors must ensure they remain socially distanced from other exhibitors whilst in the ring
- It may be necessary for dogs to be in the ring on rotation if the ring is not large enough to accommodate all exhibits in one go with social distancing
- The handler will show the dog's teeth to the judge

